



THE EUROPEAN TABLE

CARBON FOOTPRINT



Sophia Abdellali, João Martins, David Misas, Vera Veríssimo

04/10/2024

The Carbon Footprint of Food



WHAT IS FOOD CARBON FOOTPRINT ?

- THE AMOUNT OF GREENHOUSE GAS (GHG) EMISSIONS PRODUCED DURING THE ENTIRE LIFECYCLE OF A FOOD PRODUCT,
- FROM PRODUCTION TO CONSUMPTION. CARBON FOOTPRINT FOR FOOD CAN BE CALCULATED BASED ON VARIOUS FACTORS LIKE THE TYPE OF FOOD, AGRICULTURAL PRACTICES, TRANSPORTATION, AND PACKAGING.

The Carbon Footprint of Food



WHY IS IT IMPORTANT?

- ◆ MEASURES THE EFFECTS OF GLOBAL CLIMATE CHANGE
- ◆ REPRESENTS THE NUMBERS OF GREENHOUSE GASES

FOOD MENU



COQ AU VIN



BACALHAU
À BRÁS



PAELLA



KARJALANPAISTI



PIEROGI



PIZZA
MARGHERITA



KEBAP



BRATWURST



SARMALE



GOULASH



STAMPPOT



SMØRREBRØD

FORMULA

$$CF = \sum_{i=1}^n E_i$$

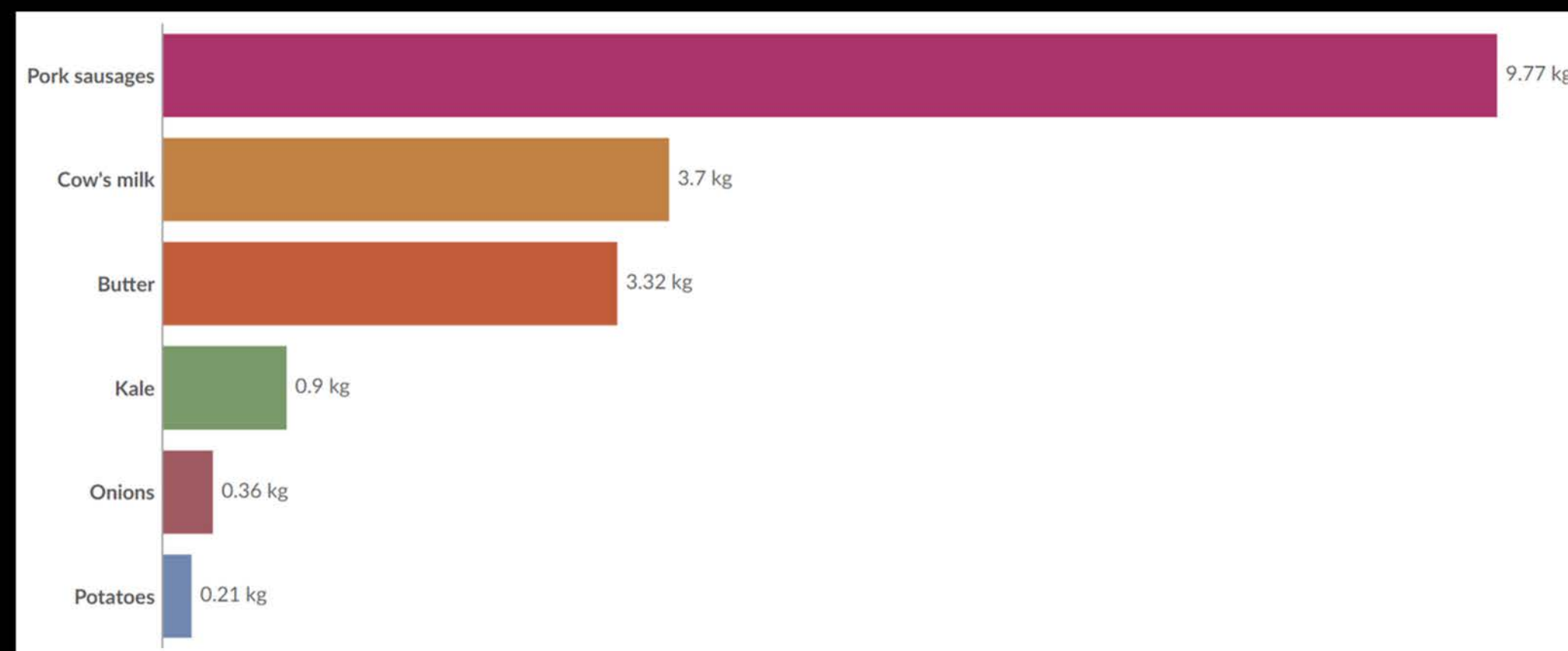
How is it calculated and why is it calculated that way:
Carbon Footprint of Food (CF) = Σ (E1 + E2 + E3 + ... + En)

Where:

- Σ = Sum of emissions from all stages of the food's lifecycle
 - E1 = Emissions from farming/production (including fertilizers, land use, machinery)
 - E2 = Emissions from processing (energy used in factories, packaging)
 - E3 = Emissions from transportation (distance traveled, mode of transport)
 - En = Emissions from consumption (storage, cooking, waste disposal)
- Each stage involves calculating emissions typically in terms of kilograms (kg) or metric tons of CO₂ equivalent (CO₂e).

INGREDIENTS

Potatoes: 400g
 Cabbage: 200g
 Onion: 1 medium (about 100g)
 Smoked sausage: 200g
 Butter: 30g
 Milk: 50ml



Potatoes Conversion:

1 kg of potatoes - 0,21 kg/Co2e

0,4 kg of potatoes - X

$$X = (0,21\text{kg}/\text{CO}2\text{e}) * 0,4\text{kg} / 1\text{kg}$$

RIGHT PORTIONS

CONVERT TO THE RIGHT PROPORTIONS

Potato - 0,08 CO₂e

Cabbage - 0,18 CO₂e

Onion - 0,036 CO₂e

Sausage - 2 CO₂e

Butter - 0,1 CO₂e

Milk - 0,2 CO₂e

0,08 + 0,18 + 0,036 + 2 + 0,1 + 0,2 = TOTAL = 2,6 KG CO₂e



FOOD MENU



COQ AU VIN

5,5 Kg of CO2



BACALHAU À BRÁS

5,5 Kg of CO2



PAELLA

4,6 Kg of CO2



KARJALANPAISTI

5,6 Kg of CO2



PIEROGI

3 Kg of CO2



PIZZA MARGHERITA

3,2 Kg of CO2



KEBAP

4,8 Kg of CO2



BRATWURST

3,4 Kg of CO2



SARMALE

4,1 Kg of CO2



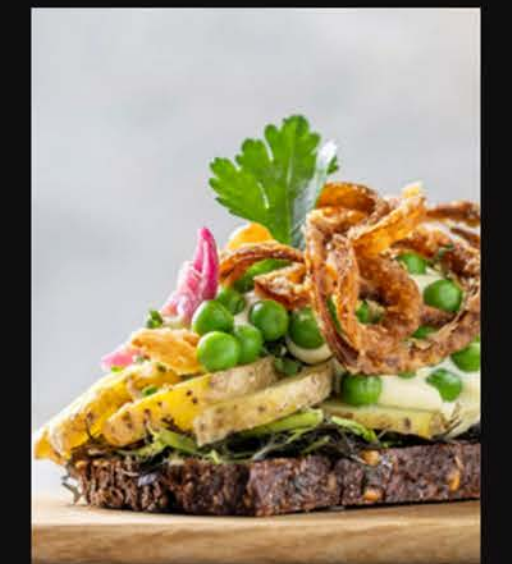
GOULASH

5,5 Kg of CO2



STAMPPOT

2,6 Kg of CO2



SMØRREBRØD

3,2 Kg of CO2

METHODS OF PAYMENT

- CASH
- CARD
- CHECK



RECEIPT

Kebap	20€
Stamppot	50€
Goulash	30€
TOTAL	100 €

THANK YOU!

METHODS OF PAYMENT

- CASH
- CARD
- CHECK
- **THE PLANET**



RECEIPT

Kebap	4.8kg CO ₂ e
Stamppot	2.6kg CO ₂ e
Goulash	5.5kg CO ₂ e
TOTAL <u>12.9kg CO₂e</u>	

THANK YOU!



THE EUROPEAN TABLE

CARBON FOOTPRINT



Sophia Abdellali, João Martins, David Misas, Vera Veríssimo

04/10/2024